



For almost 50 years VEKA has been a premium supplier of PVC profiles for the window, door, fence, deck and railing industries. For years, European corporations have been at the forefront of the closed material life cycle for sustainable products and VEKA is no exception.

Environmental awareness has always been a focus of all the VEKA facilities worldwide with the catalyst being a PVC recycling plant in Germany, operated exclusively by VEKA. For over 10 years, VEKA North America has focused on its own initiatives by using in-house mixed color, pre-consumer, reclaimed* PVC for agricultural post & rail as well as extruded packaging containers and liners.



DualEdge Eco Layer profiles are VEKA's first introduction of this reclaimed material into the marketplace. Select shapes are being introduced to our fabricator

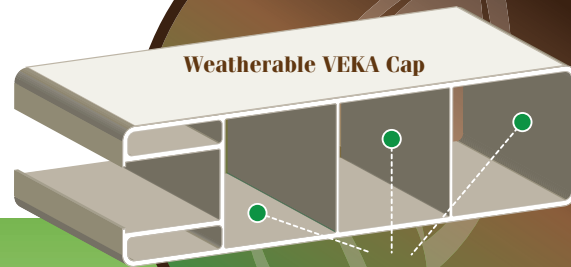
base for the manufacture of PVC fence and rail. The dual layers consist of VEKA's standard, high performance, weatherable PVC outer shell, along with our own in-house captured PVC substrate. By using our own material for the substrate, VEKA is assured that the highest quality, high-performance ingredients are blended into the formulation guaranteeing that DualEdge will exceed industry standards. As a result of proven performance characteristics, DualEdge comes with a limited lifetime warranty**.



For you, the fabricator, it is peace of mind that you are using a material that contributes to your own green initiatives through reclaimed PVC. This product uses less embodied energy to produce, which means less fuel consumption. Also, products made with DualEdge profiles show a dedication to environmental responsibility within your community.

Gain the competitive edge in the marketplace by directly effecting your bottom line with DualEdge® - Eco Layer Extrusion Technology.

* DualEdge substrate contains pre-consumer, reclaimed vinyl material from our own waste stream.
 ** Please see complete warranty for terms and conditions.



DualEdge® Eco Layer
 All internal walls are manufactured with DualEdge® PVC



VEKA PVC products have an enviro-friendly product life cycle.

1. VEKA vinyl conserves forests: Made from PVC means that VEKA vinyl products save our precious forest resources.
2. VEKA vinyl conserves resources: VEKA vinyl profiles have a life cycle of 20 years vs. wood's 7-10 year life cycle and will outlast 2 or 3 conventional installations.
3. VEKA vinyl saves oil or gas: Polyvinyl chloride is a plastic with the lowest petroleum content, about 43%. The remainder is chlorine, a common, inexpensive naturally occurring element.
4. VEKA vinyl protects the air and soil: PVC never needs to be stained, painted, UV treated or watersealed. This not only saves time and money but also keeps potentially harmful fumes and chemicals from being introduced into the air and soil.

achievegreen

VEKA is a qualifying supplier for the achievegreen design management tool for projects using the Green Building Initiative

www.achievegreen.net



VEKA DualEdge® Extruded Profiles



F1010-1
1"x1" PICKET
(0.90" Wall)
Corner R 0.125"



F1313-1
1 1/4" x 1 1/4" PICKET
(0.100" Wall)
Corner R 0.125"



F1515-1
1 1/2" x 1 1/2" PICKET
(0.120" Wall)
Corner R 0.125"



F1515-5
1 1/2" x 1 1/2" ECONOMY
(0.70" Wall)
Corner R 0.125"



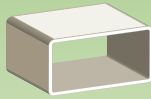
F1515-4
1 1/2" x 1 1/2" FLUTED
(0.070" Wall)
Corner R 0.125"



F0815-1
3/4" x 1 1/2" PICKET
(0.080" Wall)
Corner R 0.125"



F0915-1
7/8" x 1 1/2" PICKET
(0.090" Wall)
Corner R 0.125"



F1835-1
1 3/4" x 3 1/2" RAIL
(0.100" WALL)
CORNER R 0.188"



F2035-1
2" x 3 1/2" RAIL
(0.120" WALL)
CORNER R 0.188"



F0930-1
7/8" x 3" PICKET
(0.080" Wall)
CORNER R 0.125"



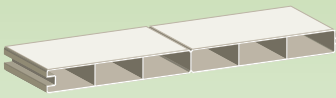
F3030-1
3" x 3" POST
(0.135" WALL)
CORNER R 0.188"



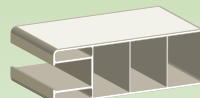
F300T-1
3" BREADLOAF RAIL
(0.110" WALL)



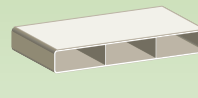
F350T-2
3 1/2" T-RAIL
(0.110" WALL)



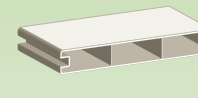
F09113-3
7/8" x 11.3" TONGUE & GROOVE PICKET
(0.060" Wall)
CORNER R 0.188"



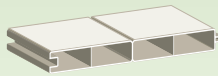
F2060-4
2" x 6" GROOVED RAIL
(0.080" Wall)
CORNER R 0.188"



F0960-2
7/8" x 6" RIBBED PICKET
(0.060" Wall)
CORNER R 0.125"



F0960-3
7/8" x 6" TONGUE & GROOVE PICKET
(0.060" Wall)
CORNER R 0.188"



F0970-3
7/8" x 7" TONGUE & GROOVE PICKET
(0.060" Wall)
CORNER R 0.188"



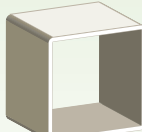
F1555-2
1 1/2" x 5 1/2" RIBBED RAIL
(0.090" Wall)
CORNER R 0.188"



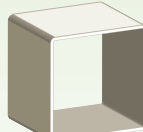
F2060-1
2" x 6" RAIL
(0.090" WALL)
CORNER R 0.188"



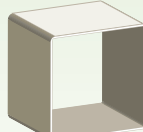
F2060-2
2" x 6" RIBBED RAIL
(0.090" WALL)
CORNER R 0.188"



F4040-1
4" x 4" POST
(0.160" WALL)
CORNER R 0.188"



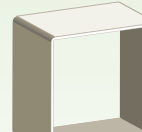
F4040-5
4" x 4" THIN WALL
(0.135" WALL)
CORNER R 0.188"



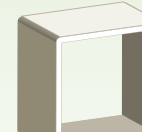
F4040-9
4" x 4" ECONOMY POST
(0.110" WALL)
CORNER R 0.188"



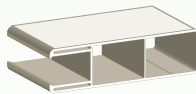
F5050-1
5" x 5" POST
(0.165" WALL)
CORNER R 0.188"



F5050-5
5" x 5" ECONOMY POST
(0.135" WALL)
CORNER R 0.188"



F5050-8
5" x 5" SUPER WALL POST
(0.250" WALL)
CORNER R 0.188"



F1555-4
1 1/2" x 5 1/2" POCKET RAIL
(0.080" Wall)
CORNER R 0.188"



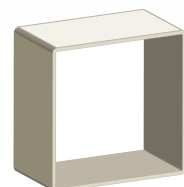
F2070-4
2" x 7" POCKET RAIL
(0.080" WALL)
CORNER R 0.188"



F2080-1
2" x 8" RIBBED RAIL
AVAILABLE AS HOLLOW RAIL (NO RIB)
(0.090" WALL)
CORNER R 0.188"



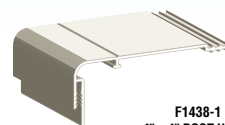
F2070D-2(1 WEB) or F2070D-4 (2 WEB)
2" x 7" DECO POCKET RAIL
(0.080" WALL)
CORNER R 0.188"



F6060-5
6" x 6" POST
(0.135" WALL)
CORNER R 0.188"



F1458-1
6" x 6" POST WRAP
(0.060" Wall)



F1438-1
4" x 4" POST WRAP
(0.060" Wall)



F1039-1
GATE BRACE
(0.175" Wall)



F090U-1
U-Channel
(0.080" Wall)

The information contained within is current at the time of printing.
Changes to products may have been made since publication.
Please visit www.vekaolp.com for complete information.
DualEdge® is a trademarks of VEKA Inc.
Copyright © 2016 VEKA Inc. All Rights Reserved. Made in the USA.

